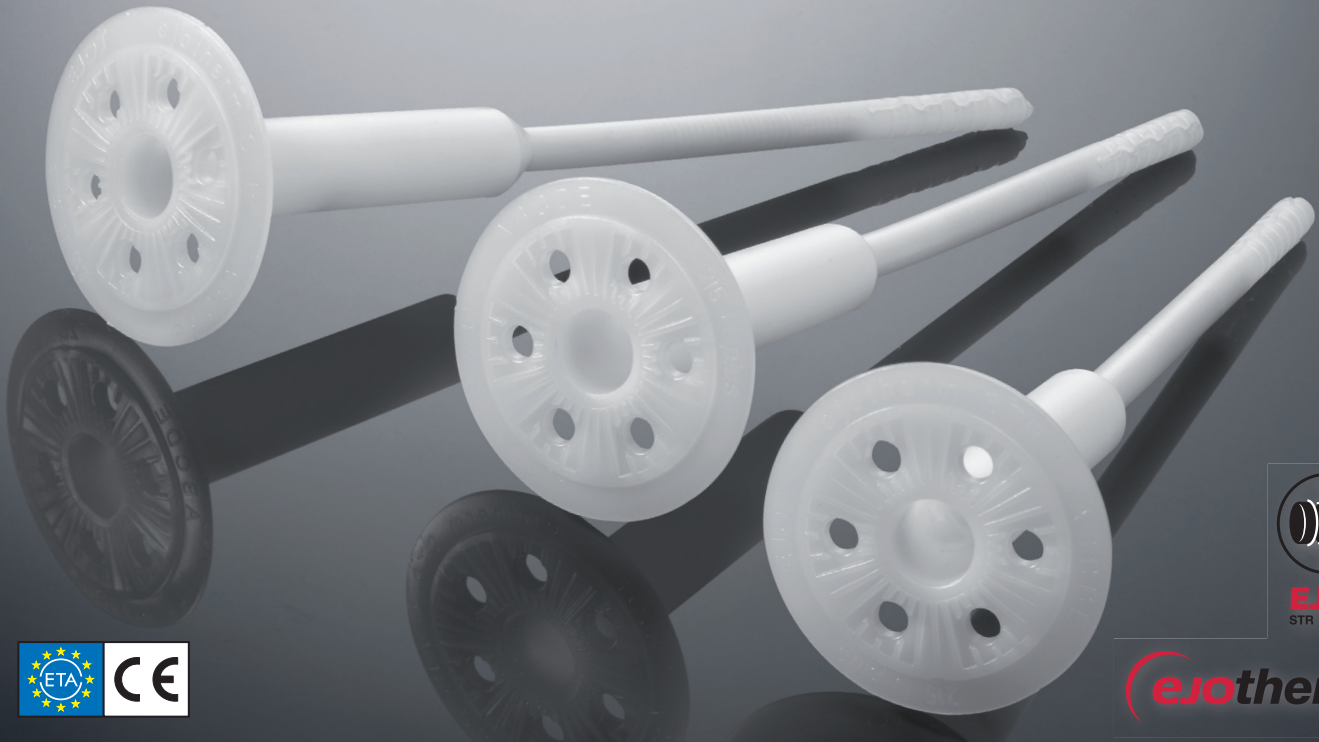




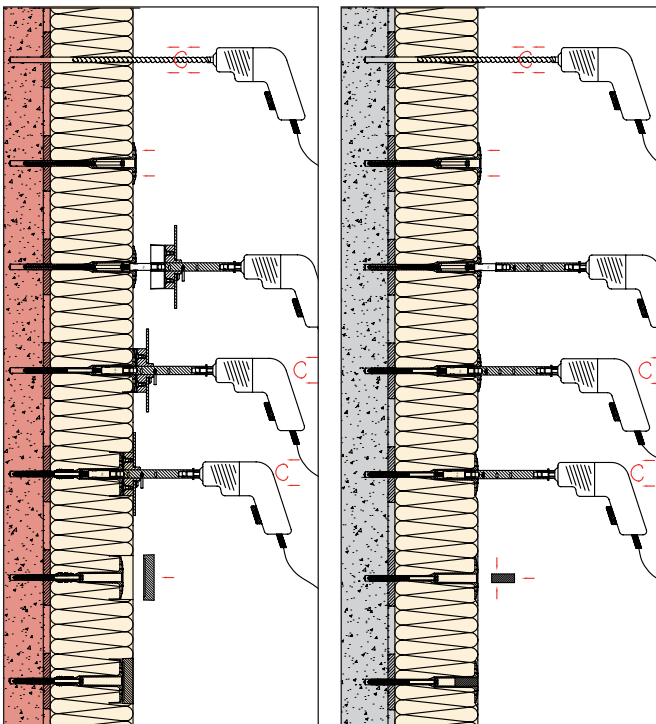
ejothem STR U 2G

Universal screw-in anchor with European Technical Approval for countersunk and surface fixed installation

Fixing of insulation boards



Installation



Countersunk installation acc. to EJOthem STR principle with EJOthem STR cap

Surface fixed installation with EJOthem STR plug

Advantages

- ❑ Approved for all categories of building material
- ❑ Countersunk installation - EJOthem STR-principle with EJOthem STR cap for homogeneous surfaces and even rendering - quick and easy without milling dust
- ❑ Up to 40% faster installation
- ❑ Optimised thermal bridging (0.001 W/K)
- ❑ Surface fixed installation using EJOthem STR plug
- ❑ Short embedment depths, high loads for maximum safety and economic anchor usage
- ❑ Permanent contact pressure
- ❑ Premounted screw for quick installation
- ❑ 100% setting control: the countersunk installation of the washer indicates safe anchorage

ejotherm STR U 2G

Universal screw-in anchor with European Technical Approval for countersunk and surface fixed installation

Fixing of insulation boards

Technical data

Screw diameter	8 mm
Washer diameter	60 mm
Drill hole depth, countersunk installation $h_1 \geq$	50 mm (90 mm)
Drill hole depth, surface fixed installation $h_2 \geq$	35 mm (75 mm)
Embedment depth $h_{ef} \geq$	25 mm (65 mm)
Screw drive	TORX T30
Point thermal transmission λ countersunk installation	0.001 W/K
Point thermal transmission λ surface fixed installation	0.002 W/K
Use categories acc. to ETA	A, B, C, D, E
European Technical Approval	ETA-04/0023

Values in parentheses: anchoring in aerated concrete (use category E)

Characteristic loads

A	Normal weight concrete C 12/15 acc. EN 206-1	1.5 kN
A	Normal weight concrete C 16/20 - C 50/60 acc. EN 206-1	1.5 kN
A	Pre-cast concrete panel C16/20 - C50/60	1.5 kN
B	Clay bricks (Mz) acc. DIN 105	1.5 kN
B	Solid lime sandstone (KS) acc. DIN EN 106	1.5 kN
D	Solid masonry of lightweight concrete (V) acc. DIN 18152	0.6 kN
C	Vertically perforated clay bricks (Hlz) acc. DIN 105	1.2 kN
C	Vertical coring reference bricks (Hlz) acc. ONÖRM B 6124	0.75 kN
C	Sand-lime perforated bricks (KSL) acc. DIN EN 106	1.5 kN
C	Lightweight concrete hollow blocks (HbL) acc. DIN 18151	0.6 kN
D	Lightweight aggregate concrete (LAC)	0.9 kN
E	Autoclaved aerated concrete P2 - P7	0,75 kN

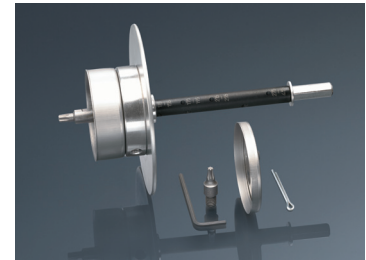
Please note: For calculation of design loads the national safety factors have to be included (e.g. Germany: 3). Please observe the approval.

Accessories

A broad range of accessories is available for the **ejotherm STR U 2G** product group:

ejotherm STR-tool 2G

Specially developed tool for countersunk installation



ejotherm STR caps and plugs



EJOT additional combi washer VT 90 and SBL 140 plus



Product range

Use category A-D		Use category E		Product name and length (mm)	Use category A-D		Use category E		Product name and length (mm)
Insulation (mm)	Insulation (mm)	Insulation (mm)	Insulation (mm)		Insulation (mm)	Insulation (mm)	Insulation (mm)	Insulation (mm)	
New build. ¹⁾	Renovation ²⁾	New build. ¹⁾	Renovation ²⁾		New build. ¹⁾	Renovation ²⁾	New build. ¹⁾	Renovation ²⁾	
80	60 ³⁾	-	-	ejotherm STR U 2G 115	280	260	240	220	ejotherm STR U 2G 315
100	80	60 ³⁾	-	ejotherm STR U 2G 135	300	280	260	240	ejotherm STR U 2G 335
120	100	80	60 ³⁾	ejotherm STR U 2G 155	320	300	280	260	ejotherm STR U 2G 355
140	120	100	80	ejotherm STR U 2G 175	340	320	300	280	ejotherm STR U 2G 375
160	140	120	100	ejotherm STR U 2G 195	360	340	320	300	ejotherm STR U 2G 395
180	160	140	120	ejotherm STR U 2G 215	380	360	340	320	ejotherm STR U 2G 415
200	180	160	140	ejotherm STR U 2G 235	400	380	360	340	ejotherm STR U 2G 435
220	200	180	160	ejotherm STR U 2G 255	420	400	380	360	ejotherm STR U 2G 455
240	220	200	180	ejotherm STR U 2G 275	Product code: 8719 ... 400 (for example: ejotherm STR U 2G 115: 8719 115 400).				
260	240	220	200	ejotherm STR U 2G 295	Packaging: 100 pieces				

¹⁾ 10 mm adhesive

²⁾ 10 mm adhesive and 20 mm old render

³⁾ to be surface fixed installation only

Please note: Always use in combination with ejotherm STR cap and ejotherm STR plug respectively