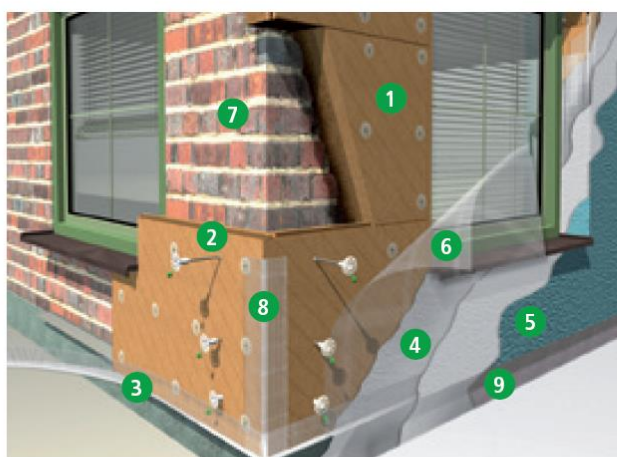


UdiRECO® SYSTEM

External thermal insulation composite system with intelligent levelling compensation



- 1 UdiRECO® Wood-fibre insulation board
- 2 UdiASSEMBLY® SDM Reco (adjustable fixing – masonry)
- 3 UdiBASE® Plinth-End Cap Profile variable
- 4 UdiFOUNDATION COAT®
- 5 UdiPERL® Primer and Structured Fine Plaster
- 6 UdiREINFORCEMENT® Strengthening Mesh
- 7 Substrate: Masonry – rendered/non-rendered
- 8 UdiREINFORCEMENT® Corner Protection Profile
- 9 Perimeter insulation with UdiPlinth sealing slurry® and plaster coating

The combination makes the difference.

The insulation system UdiRECO® is made of two different insulation layers. The flexible and soft layer provides a snug fit to the substrate and ensures a perfect insulating fit. The pressure-resistant, render-bearing insulating layer has a tongue and groove profile for optimal wind-tightness. The reinforcing render is applied to this layer and finished with a coat of fine plaster, which is available in various colours and granularities.

→ The advantages

- The soft insulation layer compensates for uneven surfaces
- Façades are better insulated than the current German energy regulations require
- Façades are less likely to develop algae or moss growth due to the "hot water bottle effect" (high thermal storage)
- Façades can be adjusted to an accuracy of a few millimetres
- No back-draughts
- No mould growth caused in living areas or in the construction
- Improved soundproofing
- Quick installation as adhesive is not required

Components

Coniferous wood
max. 0.5 % Paraffin
1.5 % PVAc (For bonding the insulation layers)
< 6 % Binding fibres in the sandwich construction

Technical data

Thermal conductivity Declared value λ_D	0,038/ 0,048 W/mK (compressed)
Design value λ	0,039 / 0,050 W/mK
Vapour diffusion resistance μ	1 / 5
Condensation retention capacity	ca. 20 % of own weight
Specific enthalpy capacity c	2100 J/kg/K
Apparent density	ca. 55 / 270 kg/m ³
Euroclass fire rating DIN EN 13501-1	E

Dimensions

Format 1.300 x 790 mm, Coverage: 1.290 x 780 mm
Tongue and groove around the whole circumference
Insulation thicknesses: 80, 100, 120, 140, 160, 180 and 200 mm



The UdiRECO^{SYSTEM} adapts to the surface to provide a snug, wind-tight fit